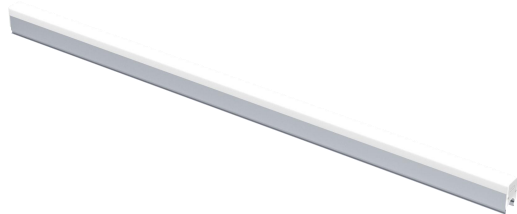


**EXC-D30AB LED Linear light**



Application Environment:  
Outdoor

**Product description:**

**EXC-D30AB** products are extra-narrow LED linear light with aluminum shell for outdoor landscape decoration. Each pixel can realize 65536 grade gray scale color changing. EXC-D30AB can be applicable for super large area displaying or outline the building. It also can be used to decorate facade inside and outside, even small area wall-washing effect.

**Features:**

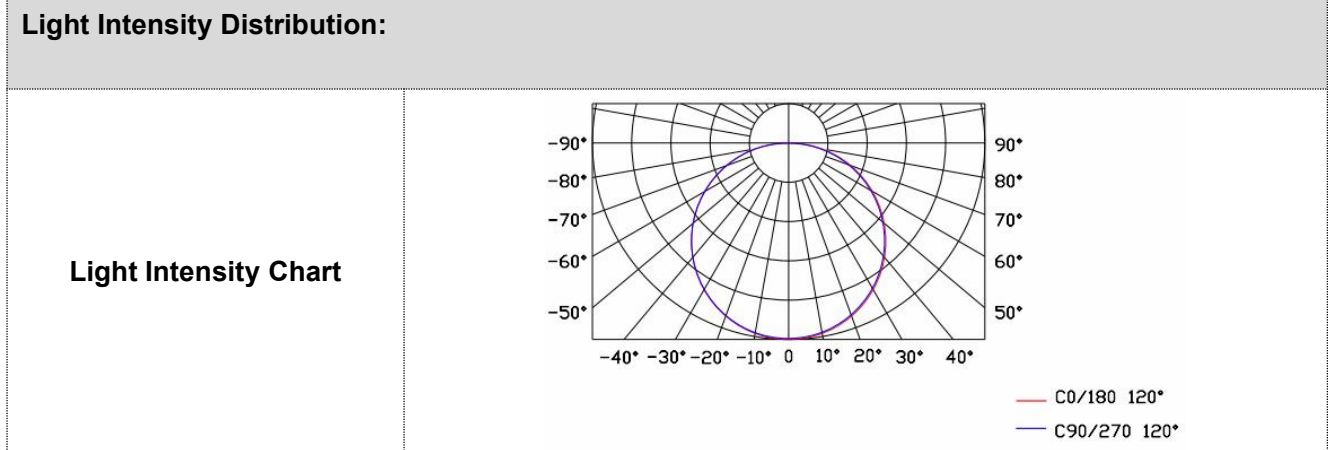
- The newest generation technology: DMX512 parallel bus design
- Support DC48V remote power supply technology.
- Full-sealed filling waterproof design by German imported glue
- Low thermal resistance path heat dissipation design
- Outdoor lightning protection and electrostatic discharge (ESD) protection design
- Extreme uniform light effect, soft and uniform, consistent light color

**Basic Specifications**

Color Range	W/RGB/RGBW
Light Source	SMD W/RGB 3in1/RGBW 4in1 LED
Source Life	35,000 h
Material	High strength aluminum alloy/PC lampshade

Weight	0.85Kg
<b>Environmental Specifications</b>	
Working Temperature	-40°C to 50°C
Storage Temperature	-40°C to 70°C
Protection Rating	IP66
<b>Electrical Specifications</b>	
Working Voltage	DC 24V/DC48V
Max. Power Consumption	18W
<b>Optical Specifications</b>	
Beam Angle	120°

<b>Controller</b>	
Host Controller	EXC-Y220、EXC-Y880、EXC-M520、 EXC-5200、EXC-6000、EXC-8000、 EXC-10000.....
Slave Controller	EXC-S880、EXC-2905.....



**Order Info**

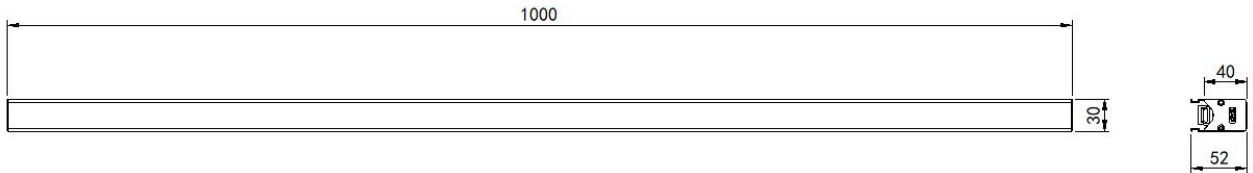
Product Model	Voltage	Power	Light Source	Control Protocol	Gray Scale Level	Material	Luminous Efficacy	LED Brand
D30AB	DC24V	12W	48pc RGB	DMX512	65536	Aluminum+PC	≥10lm/w	Optional
D30AB	DC24V	15W	60pc RGB	DMX512	65536	Aluminum+PC	≥10lm/w	Optional
D30AB	DC24V	15W	48pc RGBW	DMX512	65536	Aluminum+PC	≥20lm/w	Optional
D30AB	DC24V	18W	60pc RGBW	DMX512	65536	Aluminum+PC	≥20lm/w	Optional
D30AB	DC24V	12W	48pc W	DMX512/OFF	65536	Aluminum+PC	≥30m/w	Optional
D30AB	DC24V	15W	60pc W	DMX512/OFF	65536	Aluminum+PC	≥30lm/w	Optional
D30AB	DC48V	10W	48pc RGBW	DMX512	65536	Aluminum+PC	≥20lm/w	Optional
D30AB	DC48V	10W	48pc RGB	DMX512	65536	Aluminum+PC	≥10lm/w	Optional

**Note 1:** LED brands: CREE/OSRAM/LUMILEDS/Taiwanese/Chinese options available

**Note 2:** For optical parameters above 2700K, CREE/OSRAM/LUMILEDS chips are used as references

**Physical Dimension:**

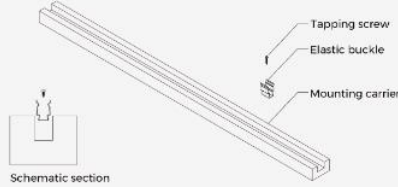
Unit: mm



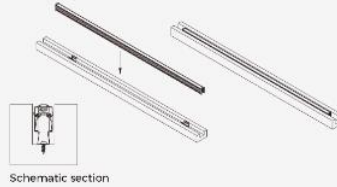
## Installation Diagram:

### Elastic Snap Mount

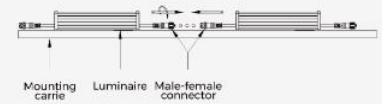
Note: The product is installed vertically and the fall arrest wire rope must be added.



1. Use ST4 self-tapping screws to fix the elastic clips to the position of the mounting carrier. The exact spacing is required by the length of the luminaire;



2. Snap the fixture onto the elastic clips, taking care to install it securely;

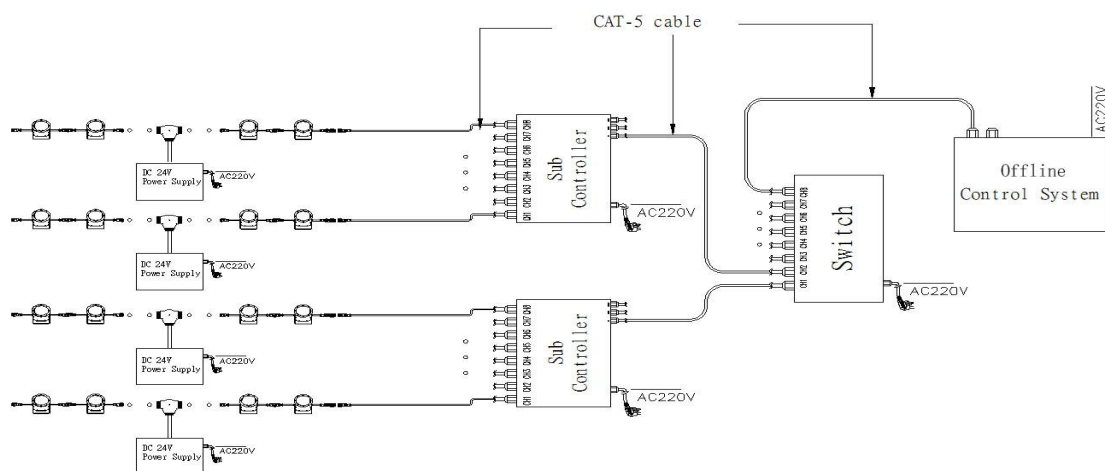


3. Finally, after inserting the male and female connectors, turn the knob on the female end to lock it, take care to install it firmly.

## System connection diagram:

- 1、Host controller should connect with slave controller. Working voltage for controllers are AC220V.
- 2、On-line main controller should connect with slave controller, on-line main controller and sub controller working voltage are AC220V.
- 3、each sub-controller with 8 ports, with each port 512 pixels, supporting data converter, supports 100 meters ultra-long haul transmission.
- 4、The CAT-5 e. cable distance should be within 100 meters between host controller and slave controller, between slave controllers and switch, etc.
- 5、the maximum spacing of not more than 5 meters, more than the need to add a signal amplifier.

## Offline Controlling System Diagram:



## Online Controlling System Diagram:

