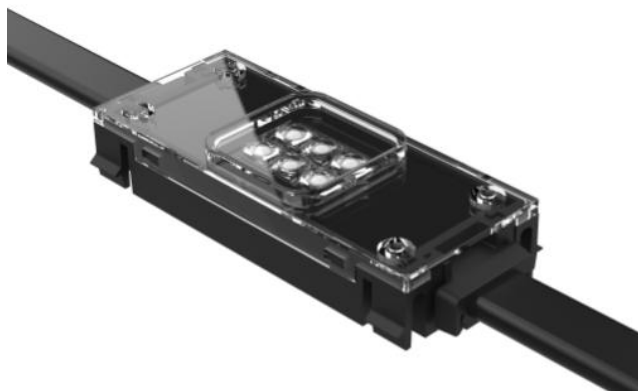


EXC-P35MB LED Pixel Light



Application Environment:
Indoor
Outdoor

Description:

EXC-P35MB Series products are a patch LED lamp string point light source specially designed for outdoor landscape lighting by EXC. A single point light source is an independent pixel, each pixel can achieve 65536 levels of gray change; Can be used for building facade large area display, contour edge, interior and exterior surface decoration lighting; Light source spacing can be customized, the installation of a variety of ways.

Features:

- The newest generation technology: DMX512 parallel bus design
- Clip on-off style connection and anti-pull connection without connector design
- High thermal conductivity transformer and full-sealed filling waterproof method by German imported glue
- Outdoor lighting protection and electrostatic discharge (ESD) protection design
- Support DC48V remote power supply technology

Basic Specifications:

Color Range	RGBW/RGB/W
Light Source	SMD RGB/W LED
Source Life	35,000 h
Material	Weather resistance, fire resistance, ABS / PC lens
Weight	60g

Environmental Specifications

Working Temperature	-40°C to 50°C
Storage Temperature	-40°C to 70°C
Protection Rating	IP66

Electrical Specifications

Working Voltage	DC 48V
Max. Power Consumption	1.5W

Optical Specifications

Beam Angle $\geq 105^\circ$

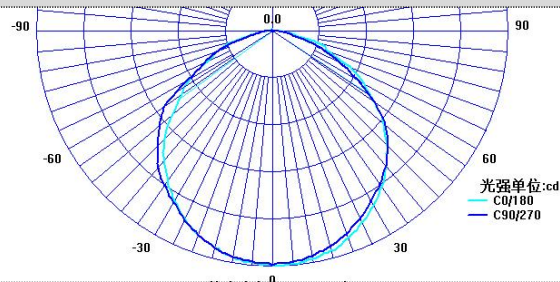
Controller

Host Controller EXC-Y220 、 EXC-Y880 、 EXC-M520 、 EXC-M620 、 EXC-M630
EXC-M830 、 EXC-6000 、 EXC-8000 、 EXC-10000

Slave Controller EXC-2905T、 EXC-S880

Light Intensity Distribution

Light Intensity Chart

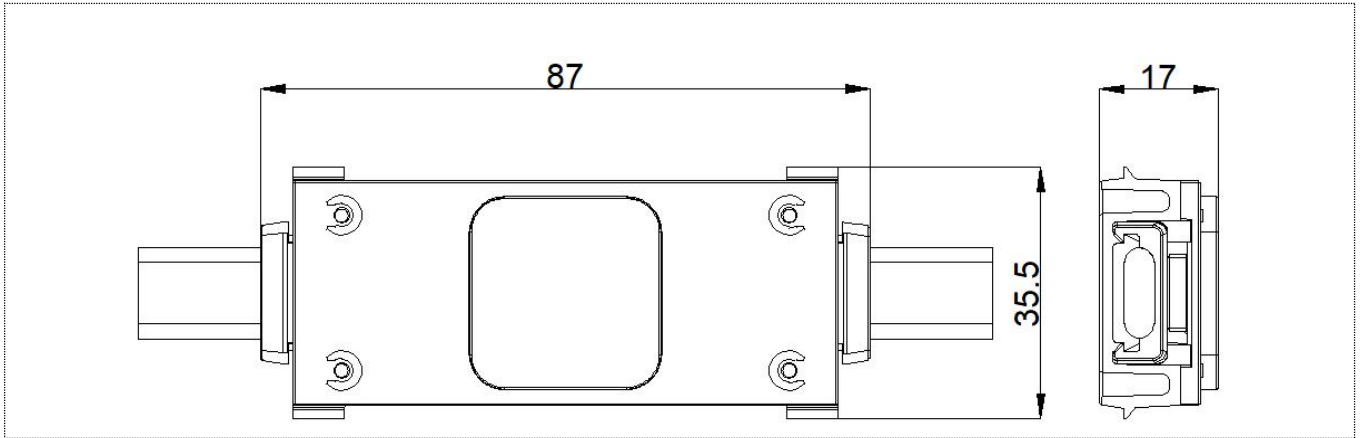


Order Info

Product Model	Voltage	Power	Light Source	Control Protocol	Gray Scale Level	Material	Central Luminous Intensity	LED Brand
EXC-P35MB	DC48V	1.5W	4pc RGB+2pc W	DMX512	65536	Engineering Plastic	$\geq 17\text{cd}$	Optional
EXC-P35MB	DC48V	1.5W	6pc RGB	DMX512	65536	Engineering Plastic	$\geq 12.5\text{cd}$	Optional
EXC-P35MB	DC48V	1.5W	6pc W	DMX512 ON/OFF	65536	Engineering Plastic	$\geq 20\text{cd}$	Optional

Physical Dimension:

Unit: mm

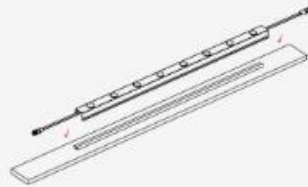


Single-sided profile mounting:

Single-sided profile mounting



1. The power line, network cable in advance to lay in the point light source installation on the corresponding position;

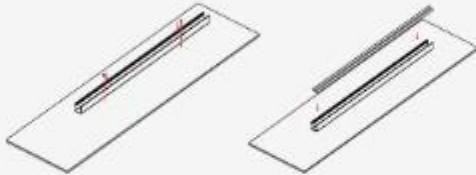


2. Placement of the lamp body with the pixel light source on the mounting carrier;

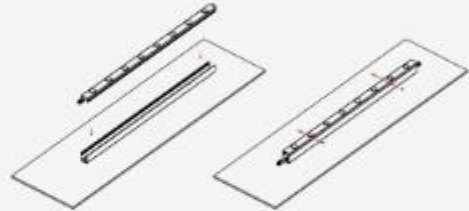


3. Screws to secure the single-sided profile to the mounting carrier.

Double-sided profile mounting



1. The profile back cover is screwed to the mounting carrier, Installation of power and network cables inside the profile back cover;

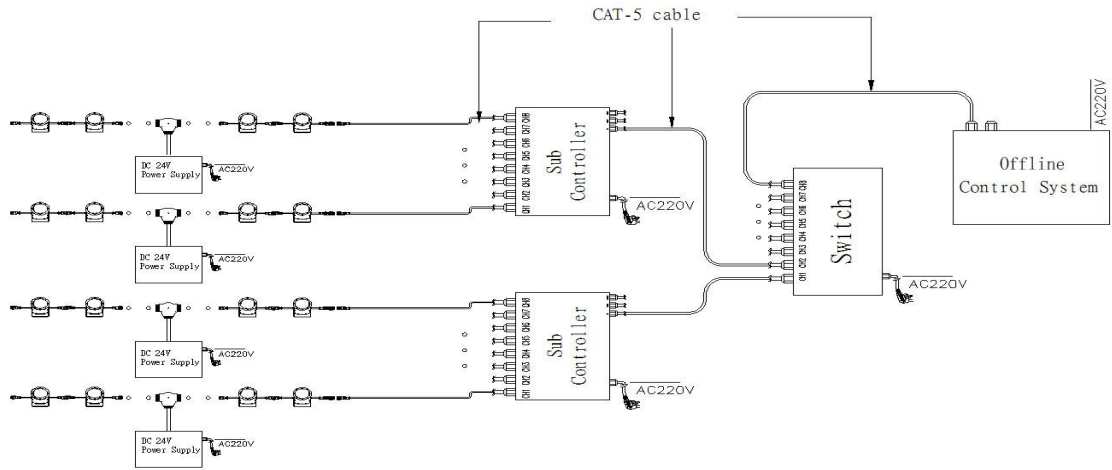


2. Close the cover of the profile with the light installed, Fasten the cover to the rear cover with screws on both sides.

System connection diagram:

- 1、 Host controller should connect with slave controller. Working voltage for controllers are AC220V.
- 2、 On-line main controller should connect with slave controller, on-line main controller and sub controller working voltage are AC220V.
- 3、 each sub-controller with 8 ports, with each port 512 pixels, supporting data converter, supports 100 meters ultra-long haul transmission.
- 4、 The CAT-5 e. cable distance should be within 100 meters between host controller and slave controller, between slave controllers and switch, etc.
- 5、 the maximum spacing of not more than 5 meters, more than the need to add a signal amplifier.

Offline Controlling System Diagram:



Online Controlling System Diagram

