

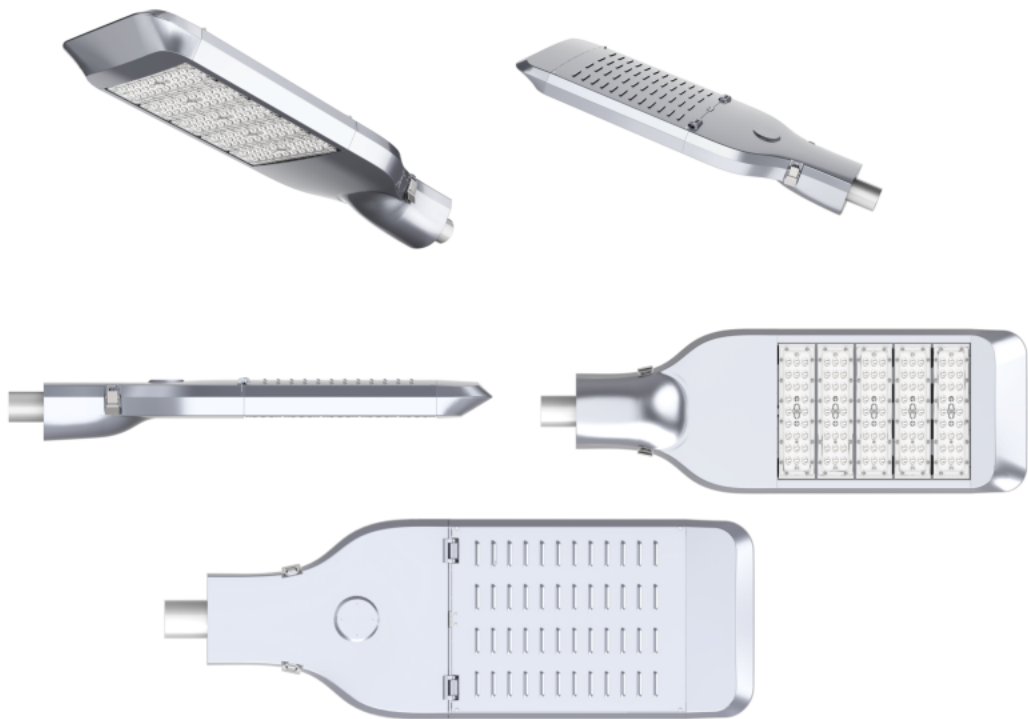
Guard street light

EXC-RL-Z03 series

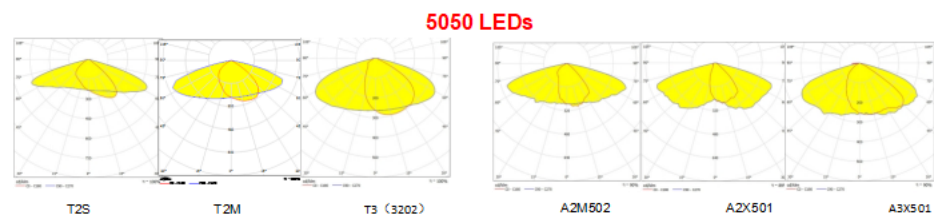
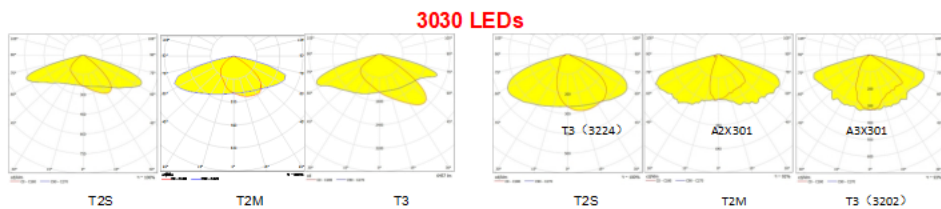


Introduction

- EXC-RL-Z03 series are modular street lights, which provide a brand-new solution for road lighting. The series adopts GB module design, flexible and adjustable matching, convenient maintenance; flexible adjustment of the lamps, the elevation angle of the lamps can be adjusted according to the site conditions;
- Using modular heat dissipation technology to provide excellent heat dissipation management performance. The maximum heat dissipation effect ensures the performance and life of the lamp, and the design of the lamp is more compact and smarter;
- Independent electrical cavity design and photoelectric separation design to ensure the stability of each system and avoid heat accumulation;
- First-line light source and power supply provide high performance and high reliability and reduce operating costs;
- The lens adopts high-quality imported optical-grade materials, with accurate light distribution, high efficiency and strong weather resistance;
- A variety of light distribution angles, suitable for various lighting applications;
- PLC/ZIGBEE/light sensor and other smart control options;
- EXC-RL-Z03 series with its high performance, high reliability, high light control technology provides a highly competitive solution for road lighting, and its beautiful shape will also become a unique landscape of the city.

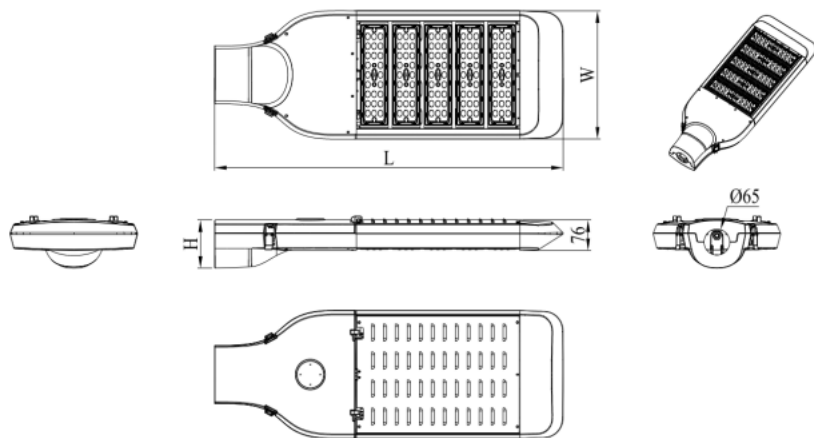


Lighting curve



Size

Model No.	Power(W)	Size(mm)			Screw size	Maximum windward area(m ²)	Weight (kg)
		L	W	H			
EXC-RL-Z03-60	60	555	320	120	M10	0.146m ²	4.5
EXC-RL-Z03-120	120	635	320	120	M10	0.171m ²	5.2
EXC-RL-Z03-180	180	715	320	120	M10	0.197m ²	6.6
EXC-RL-Z03-240	240	795	320	120	M10	0.222m ²	7.6
EXC-RL-Z03-300	300	875	320	120	M10	0.248m ²	9



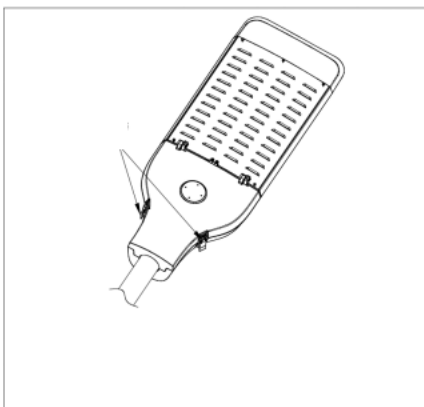
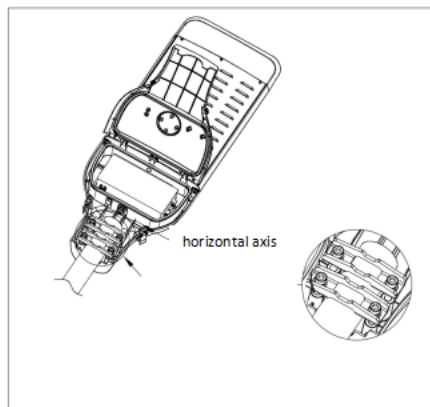
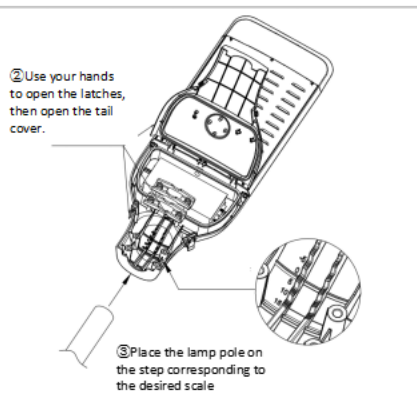
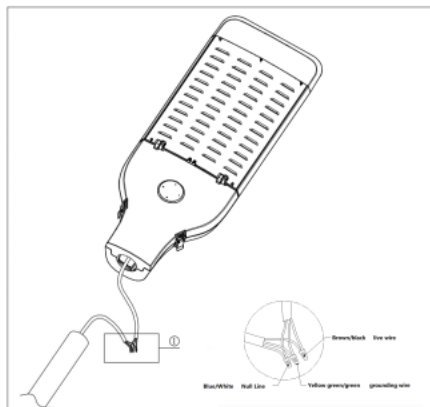
Model No.	EXC-RL-Z03EXC-RL-Z03-300									
Power (W)	50	60	100	120	150	180	200	240	250	300
Voltage (V)	90-305Vac									
Frequency (Hz)	50/60Hz ±3Hz									
PF	PF≥0.95									
Driver efficiency	≥0.9									
Rated input voltage	200V-240Vac									
Input voltage range	90-305Vac									
Maximum input current (A)	0.60	0.73	1.21	1.45	1.81	2.18	2.42	2.90	3.02	3.62
THD	<15%									
LED chip	3030/5050									
3030	56	64	112	128	168	192	224	256	280	320
5050	24	28	48	56	72	84	96	112	120	140
Driver brand	Moso, Sosen, Inventronic, Meanwell									
Lighting efficiency (lm/W)	≥130 (3030) or ≥150 (5050)									
Ra	> 70									
CCT	3000K/4000K/5000K/5700K									
Lighting angle	60°/90°/144°60°/155°75°/ Type2/Type3									
Tc (°C)	≤80 (Ta=25°C)									
Working temperature (°C)	-40 ~ +50									
Working humidity	10%-90%									
Lifespan (H)	50000									
IK degree	IK10									
IP degree	IP66									
N.W(kg)	4.5		5.2		6.6		7.6		9	
G.W(kg)	5.7		6.6		8.2		9.4		11	
Size(mm)	555*320*120		635*320*120		715*320*120		795*320*120		875*320*120	
Carton size(mm)/pcs	617*382*189/1 PCS		697*382*189/1PCS		777*382*189/1PCS		857*382*189/1PCS		937*382*189/1 PCS	
Material	ADC12/AL6063/PC									
Installation method	Horizontal installation (the angle can be adjustable)									

Installation

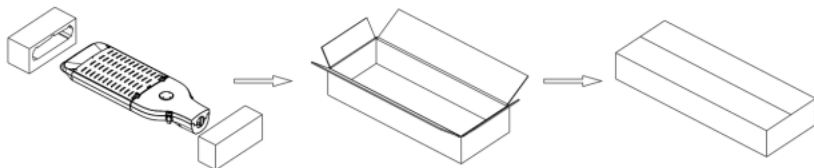


Warnings:

1. Cut off the main power before operation, it is strictly prohibited when it connects with electricity!
2. it must be connected with ground wre.



Packaging



1. 0/1-10V dimming, time control, daylight sensor, IoT control, etc;
2. 3-pin, 5-pin, 7-pin NEMA base;
3. Coastal anti-corrosion coating;
4. Electrical isolation switch;
5. 10KV or 20KV surge protection;
6. Pole diameter: 60-42mm, 76-60mm.

Attentions

1. Any form of installation/uninstallation or maintenance and electrical work must only be performed by a qualified electrician.
2. All wiring should be done after cutting off the power.
3. The street light must be grounded.
4. Always keep the lens/diffuser of the product cleaned to maintain good light transmission.
5. Always keep the shell of light cleaned to maintain good heat dissipation.
6. Cleaning must only be done with dry or wet cloth and the high bay should not be exposed to corrosive substance.
7. High voltage inside the fixture, please do not disassemble it, serious electric shock may occur otherwise.



Shenzhen EXC-LED Technology Co., Ltd

EXC Industrial Park, No. 589 Kenong Road, Tangjia Community,
Fenghuang Street, Guangming District, Shenzhen, China