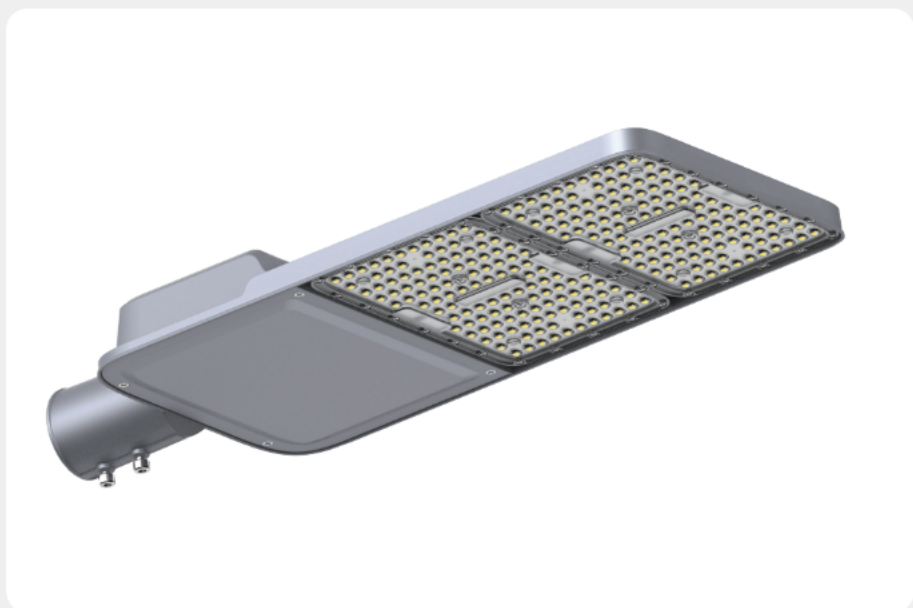


Z10 street light

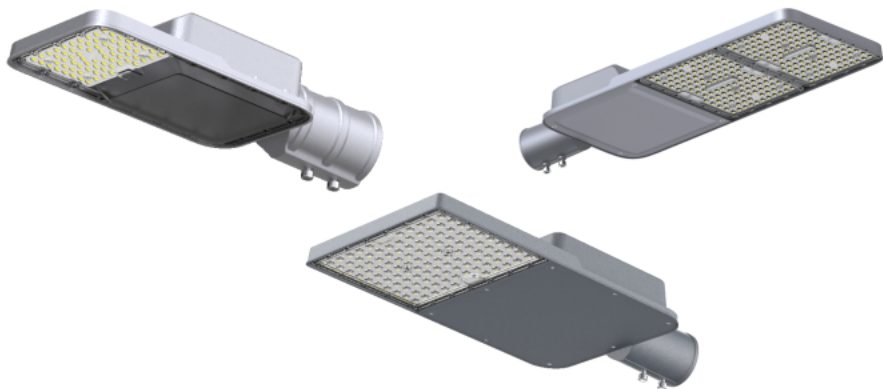
EXC-RL-Z10 series

Version: R002

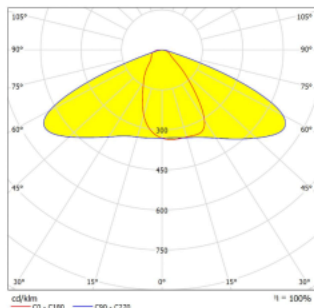


Introduction

- EXC-RL-Z10 series features a one-piece die-cast design, aesthetically pleasing and generously sized, with a variety of light distribution options to accommodate all roadway lighting, creating an optimized roadway lighting environment;
- Utilizes an integrated body cooling technology to provide superior thermal management. Maximized heat dissipation results in a longer performance, lifespan and the luminaire design is also more compact and dexterous;
- Optoelectronic separation design ensures the stability of each system and avoids thermal aggregation.
- High protection design, high impact resistance, waterproof and dustproof performance;
- International first-line light source and power supply, providing high performance and high reliability, reducing operating costs;
- EXC-RL-Z10 series with its high performance, high reliability and high light control technology provides a competitive solution for road lighting, and the beautiful shape will become a unique landscape of the city.

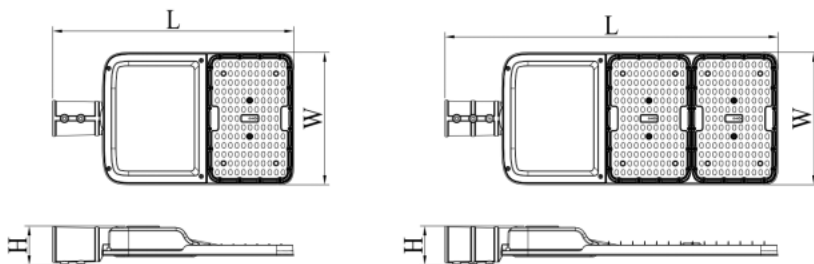


Lighting curve



Size

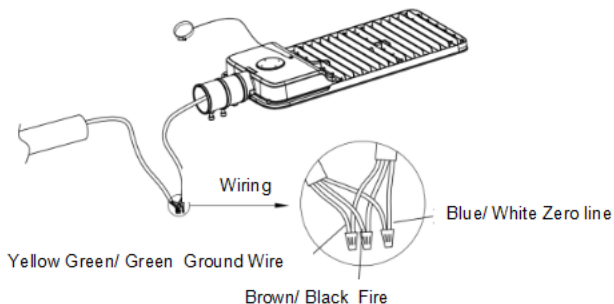
Model No.	Power(W)	Size (mm)			Screw size	Maximum windward area(m2)	Weight (kg)
		L	W	H			
EXC-RL-Z10-30	30	395	174	87	M8	0.035	1.9
EXC-RL-Z10-60	60	395	174	87	M8	0.035	1.9
EXC-RL-Z10-80	80	514	280	83	M8	0.043	2.3
EXC-RL-Z10-100	100	514	280	83	M8	0.043	2.3
EXC-RL-Z10-120	120	514	280	83	M8	0.043	2.4
EXC-RL-Z10-150	150	710	280	83	M8	0.059	3.6
EXC-RL-Z10-180	180	710	280	83	M8	0.059	3.7
EXC-RL-Z10-200	200	710	280	83	M8	0.059	3.8
EXC-RL-Z10-240	240	710	280	83	M8	0.059	4.0



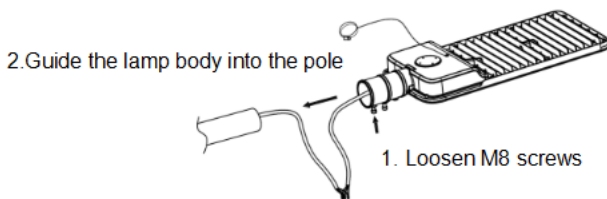
Performance

Model No.	EXC-RL-Z10								
Power(W)	30W	60W	80W	100W	120W	150W	180W	200W	240W
Voltage (V)	90-305Vac								
Frequency (Hz)	50/60Hz								
PF	≥0.95								
Driver efficiency	≥0.92								
Rated input voltage	220-240Vac								
Input voltage range	90-305Vac								
Maximum input current (A)	0.381	0.76	1.00	1.22	1.47	1.83	2.17	2.42	3.02
Harmonic distortion	<20%								
LED chip	EMC3030、5050								
Quantity for LEDs(3030)	32	68	88	112	128	176	192	224	256
Quantity for LEDs(5050)	14	28	36	46	56	72	84	92	112
Brand for LED chip	Lumiled OR TYF LEDs								
Driver	Moso、Inventronic、Sosen								
Lighting efficiency for whole lamp (lm/W)	3030: 130-180(LM/W)								
Ra	>70								
CCT	3000K/4000K/5000K/5700K								
Lighting angle	TYPE2 /TYPE3 /TYPE4								
Tc (°C)	≤80 (Ta=25°C)								
Working temperature(°C)	-40~+50								
Working humidity	10%-90%								
Lifespan (H)	50000								
IK degree	IK08								
IP degree	IP66								
N.W(kg)	1.8		2.3		2.4	3.6	3.7	3.8	4.0
G.W(kg)	3.2		3.6		3.7	5.4	5.5	5.6	5.8
Size (mm)	395*174*87			514*280*83			710*280*83		
Carton size (mm)/pcs	470*225*114			589*330*145			785*330*145		
Material	ADC12								
Installation method	horizontal/vertical, pole φ40-60mm								

Installation



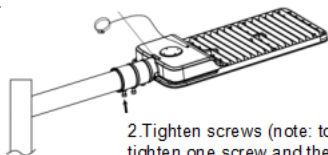
1. Connect the input wire of the fixture with the utility wire of the pole, and connect the corresponding wires as shown in the diagram, and make sure that the color of each connected wire is the same (please refer to the detailed drawing). After connecting, it is necessary to do the corresponding waterproof and anti-pulling treatment.



2. Loosen the two M8 screws, insert the fixture sleeve into the light pole.

Installation

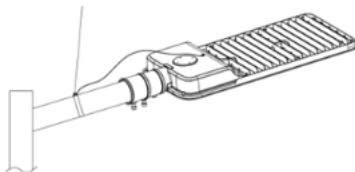
1. Observe the level and adjust the fixture so that it is level.



2. Tighten screws (note: torque is 8Nm, tighten one screw and then the other, single screws are tightened at once, do not alternate repeatedly between two screws as this may damage the sleeve).

3. Observe the level, so that the bubble in the center position, and then lock the two M8 screws.

4. Loosen the screws on the end of the safety rope clamp with a one-pronged wrench, tie the clamp to the pole, and then tighten the clamp screws with a one-pronged wrench.



4. Connect the input wire of the fixture with the utility wire of the pole, and connect the corresponding wires as shown in the diagram, and make sure that the color of each connected wire is the same (please refer to the detailed drawing). After connecting, it is necessary to do the corresponding waterproof and anti-pulling treatment.

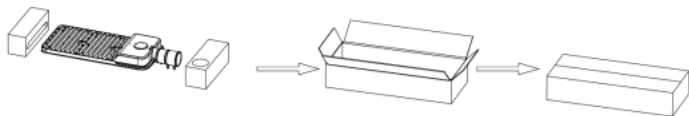
Options

1. 0/1-10V dimming, time control, lighting sensor, IOT control, etc;
2. 3-pin, 5-pin, 7-pin NEMA base;
3. Seaside anti-corrosion coating;
4. 10KV or 20KV surge protection;
5. Pole fixing: 60-40mm, 76-60mm.

Warnings:

1. To avoid injury, disconnect the driver of lamp and cool the unit.
2. There are no user-serviceable parts inside. Risk of electric shock.

Packaging



Attentions

1. Any form of installation/uninstallation or maintenance and electrical work must only be performed by a qualified electrician.
2. All wiring should be done after cutting off the power.
3. The street light must be grounded.
4. Always keep the lens/diffuser of the product cleaned to maintain good light transmission.
5. Always keep the shell of light cleaned to maintain good heat dissipation.
6. Cleaning must only be done with dry or wet cloth and the high bay should not be exposed to corrosive substance.
7. High voltage inside the fixture, please do not disassemble it, serious electric shock may occur otherwise.



Shenzhen EXC-LED Technology Co., Ltd

EXC Industrial Park, No. 589 Kenong Road, Tangjia Community,
Fenghuang Street, Guangming District, Shenzhen, China