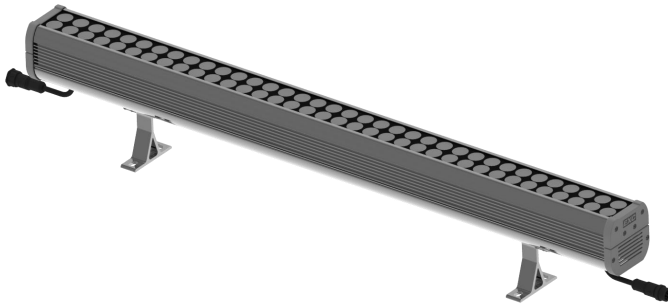


**EXC-W80FBH LED Wall Washer**



Application Environment:  
Indoor  
Outdoor

**Description:**

**EXC-W80FBH** product is a high-strength aluminum alloy shell and strip high-power wall washer designed for outdoor landscape lighting. It can be used in specific lighting areas or landscape coloring, and is applied to building facades, bridges, stages, etc.; Various lengths of lamps are optional.

**Features:**

- Simple appearance, full-flat design of light-emitting surface
- High-strength aluminum alloy lamp body, low thermal resistance and heat dissipation design
- New Generation DMX512 Parallel Bus Technology Design
- Outdoor lighting protection and electrostatic discharge (ESD) protection design
- Height of wall washing: 7-10m

**Basic Specifications**

Color Range	W/RGB/RGBW
Light Source	SMD R/G/B/W LED
Source Life	35,000h
Material	(High-strength aluminum alloy/tempered glass)
Weight	6.0 Kg

**Environmental Specifications**

Working Temperature	-40°C-50°C
Storage Temperature	-40°C-70°C
Protection Rating	IP66
Application Environment	Outdoor

**Electrical Specifications**

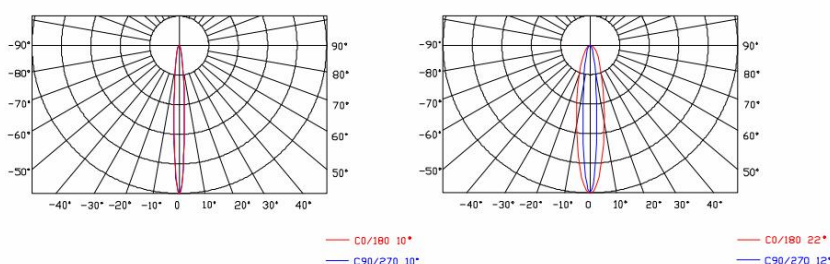
Working Voltage	220V
Max. Power Consumption	120W (W)、150W (RGBW)

**Optical Specifications**

Beam Angle	6°、10°、12*22°、
<b>Controller</b>	
Host Controller	EXC-Y220、EXC-Y880、EXC-M520、EXC-M620、EXC-M630 EXC-M830、EXC-6000、EXC-8000、EXC-10000
Slave Controller	EXC-2905T、EXC-S880

**Light Intensity Distribution**

**Light Intensity Chart**



**Order Info**

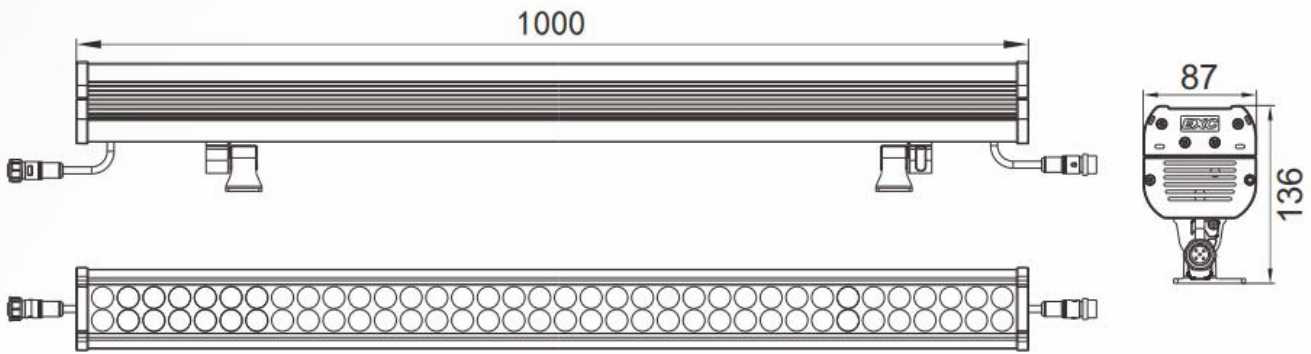
Product Model	Voltage	Power	Light Source	Angle	Control Protocol	Gray Scale Level	Material	Luminous Efficacy	LED Brand
W80FBH	AC220V	120W	72 pc W	10/12*22/12*45/ 15/16*50/20/ 20*40/30/45/60°	ON/OFF	/	aluminum + glass	≥70lm/w	Note 1
W80FBH	AC220V	150W	24pc R+24 pc G+24 pc B		DMX512	256/65536	aluminum + glass	≥30lm/w	Note 1
W80FBH	AC220V	150W	18 pc R+18 pc G+18 pc B+18 pc W		DMX512	256/65536	aluminum + glass	≥35lm/w	Note 1

**Note 1:** LED brands: CREE/OSRAM/LUMILEDS/Taiwanese/Chinese options available

**Note 2:** For optical parameters above 2700K, CREE/OSRAM/LUMILEDS chips are used as references

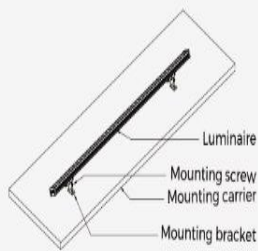
### Physical Dimension

Unit: mm



### Installation Diagram

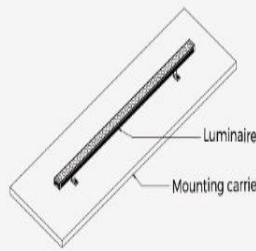
#### Lighting Installation



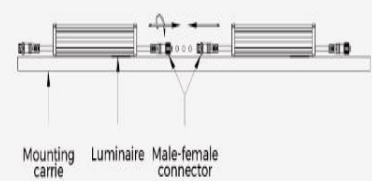
1. Rotate the bracket at an angle so that the bracket mounting holes are exposed;



2. Secure the luminaire to the mounting carrier with the mounting screws as shown;



3. Rotate the fixture to the desired angle, taking care to mount it securely;

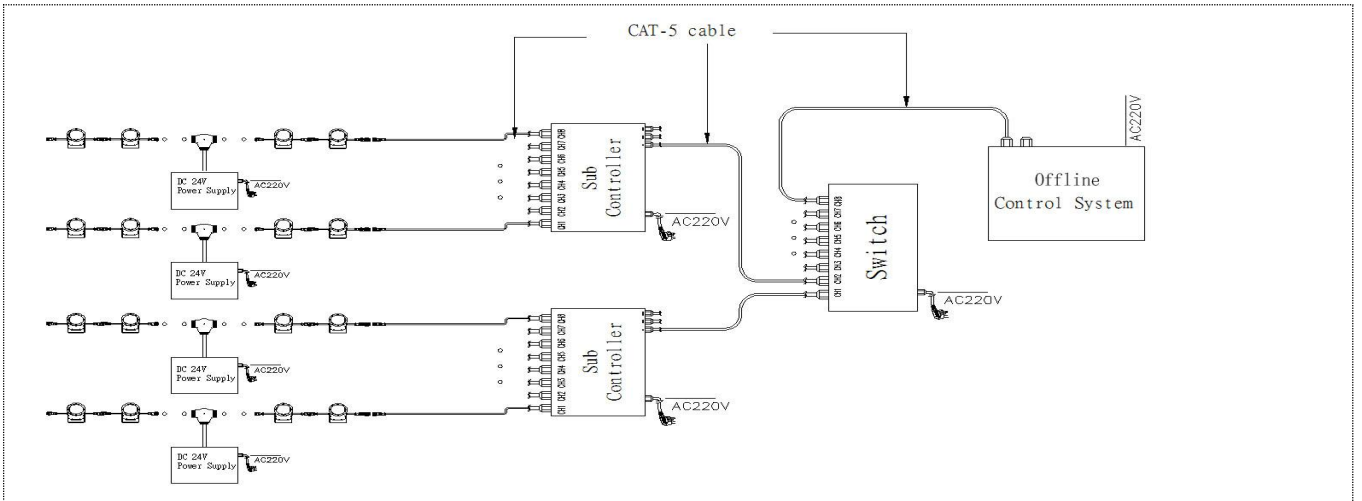


4. Finally, after inserting the male and female connectors, turn the knob on the female end to lock it, take care to install it firmly.

### System connection diagram:

- 1、 Host controller should connect with slave controller. Working voltage for controllers are AC220V.
- 2、 On-line main controller should connect with slave controller, on-line main controller and sub controller working voltage are AC220V.
- 3、 each sub-controller with 8 ports, with each port 512 pixels, supporting data converter, supports 100 meters ultra-long haul transmission.
- 4、 The CAT-5 e. cable distance should be within 100 meters between host controller and slave controller, between slave controllers and switch, etc.
- 3、 5、 the maximum spacing of not more than 5 meters, more than the need to add a signal amplifier.

### Offline Controlling System Diagram:



**Online Controlling System Diagram:**

